

Service Bulletin 1001 Circuit Board Mounting Post

Date

Issued 14-July 2010

Product

4100 HiTorque Mini Lathes serial numbers 00175 through 00199

Issue

There is an extra circuit board mounting post in the control box that causes stress on the main motor control circuit board. This can cause contact problems between the daughter board and the main circuit board.

Solution

Follow these steps to correct this issue:

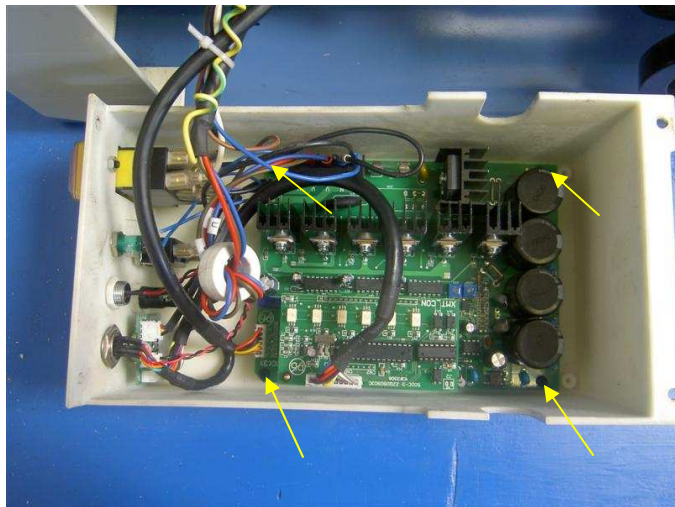
1. Unplug the power cord and wait 10 minutes for the power capacitors to discharge.
2. Move the lathe to the front of the workbench and remove the two screws that retain the bottom of the control box.
3. Move the lathe back from the edge of the workbench.
4. Raise the chuck guard.



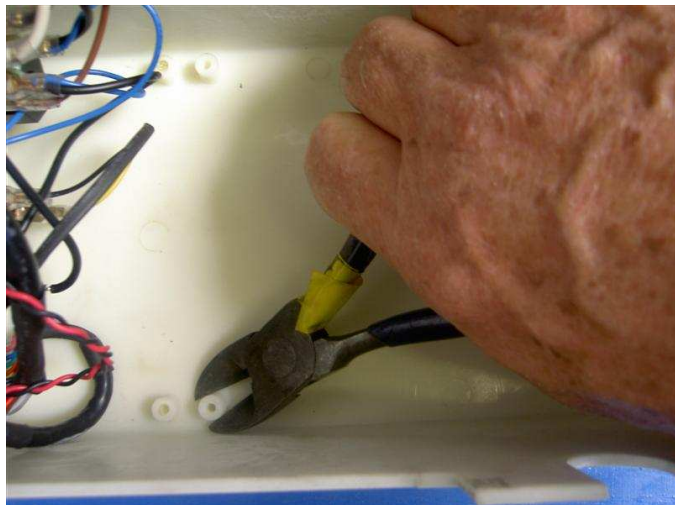
5. Remove the two screws that retain the top of the control box.
6. Pull the control box away from the headstock and turn it so you can access the interior.



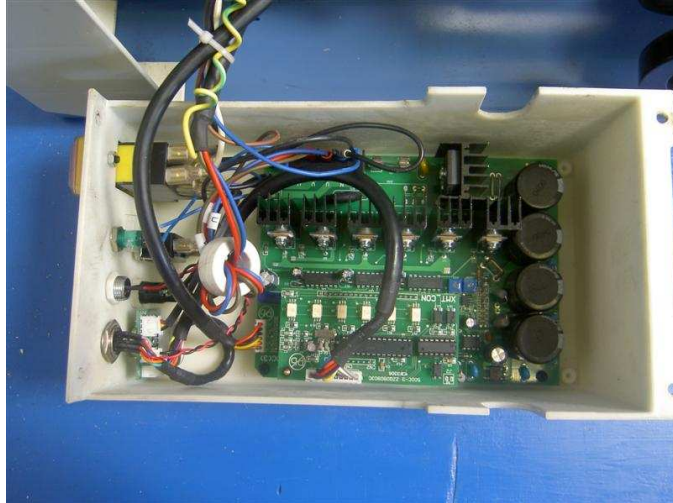
7. Remove the four screws that retain the large circuit board. Do not disconnect any wires.
8. Move the circuit board out of the way so you have access to the two top left circuit mounting posts in the control box.



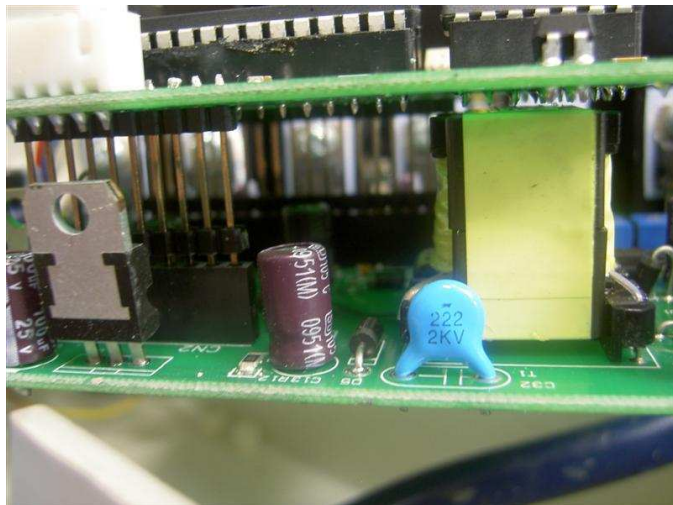
9. Using a large pair of diagonal cutters cut the lower (inside) post off as close to flush as you can. You can leave 1/8" of the post without causing any problems.



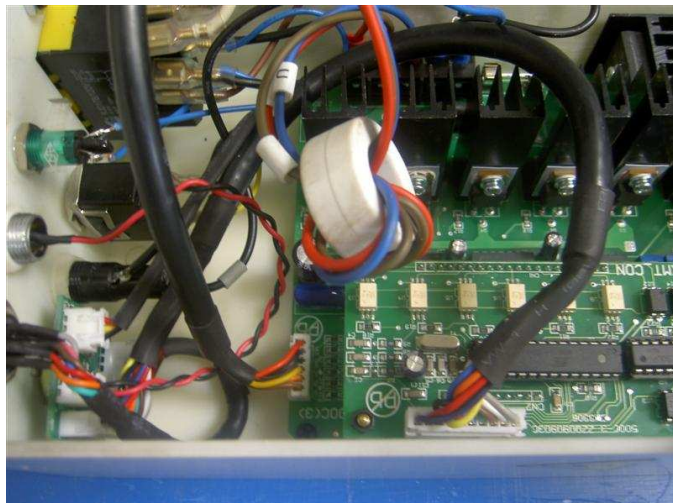
10. Replace the circuit board in the control box and replace the four sheet metal screws.



11. Ensure that the daughter board is firmly seated in the connectors on the main circuit board.



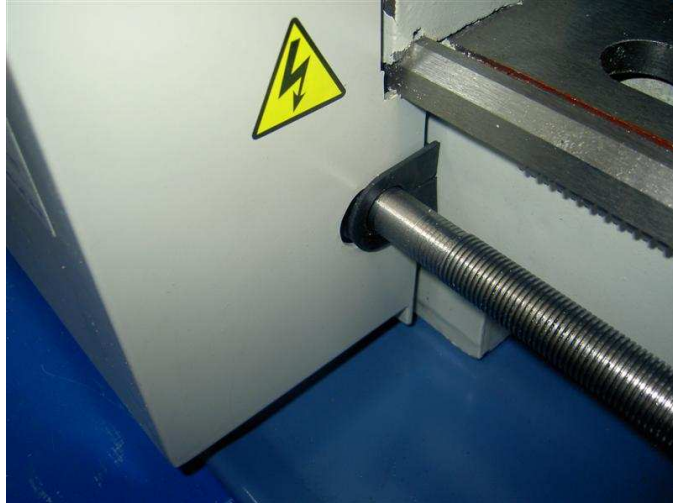
12. Adjust the ferrite ring so it is inside the control box.



13. Reposition the control box on the front of the headstock. Be sure to engage the slot in the rubber chip guard on the lead screw.

14. Replace the two top screws.

15. Move the lathe to the front of the workbench and replace the two screws that retain the bottom of the control box.



16. Move the lathe back from the edge of the workbench.

17. Lower the chuck guard into the running position.

18. Turn the speed control knob all the way counter clockwise.

19. Plug in the power cord.

20. Press the green ON button. You should hear the interlock relay latch.

21. Turn the speed control knob clockwise. The motor should start to turn.